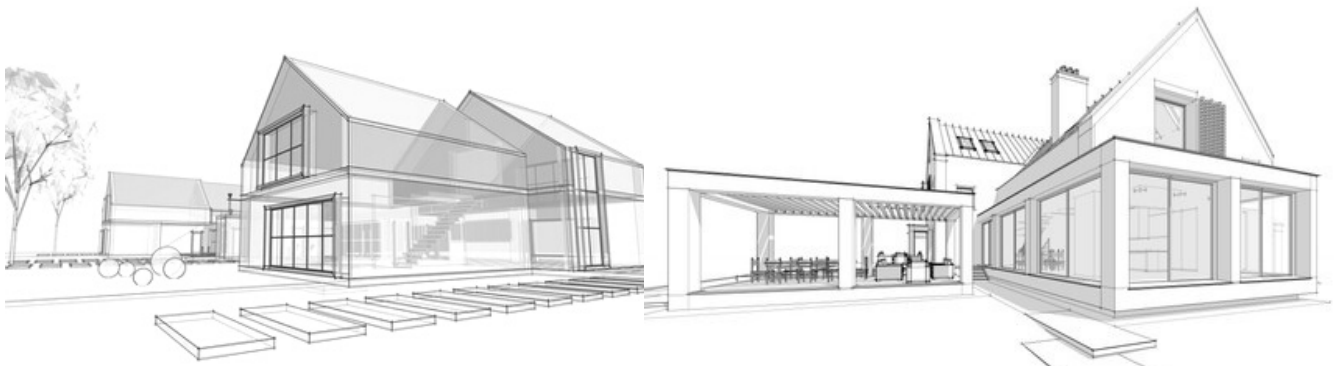


# RENOVATION PLAN EMPLOYEES FACILITY



\*indicative



## EMPLOYEES FACILITY

capacity: 15p



\*indicative

**AZAR** architecten

The conceptual design is currently developed by AZAR Architects

Mohamed Arab (architect)

<http://www.azararchitecten.nl/>







**CARE**

## *for lifeskills*

A plan for Real Estate Acquisition and  
the Establishment of Hollands first Islamic Care Farm  
Orphanage with Youth Care Facilities  
Draft for discussion v1.2





## INTRODUCTION

Every year, more than 6 thousand underage children lose one or both parents

In 2013, the Central Bureau of Statistics drew up a report on semi-orphans and orphans in the Netherlands. At the end of 2011, there were 34 thousand minors who had lost one of their parents and 330 of whom both parents have died. Every year, more than 6 thousand minors are orphaned or semi-orphaned. After the loss of their mother, children more often live in a stepfamily, foster family or independently than after the loss of their father.

*Majority lose father and become semi-orphaned in puberty*

At the end of 2011, there were 3 million minors living in the Netherlands. In the period 1995-2011, an average of 6.4 thousand underage children lost one or two parents per year. This number has decreased slightly during this period. About one in five has this before the age of six. Half are orphaned or semi-orphaned during puberty (12 to 18 years). Two out of three of these minors lose their father.

Relatively often to a foster family or to live independently after the loss of a mother

Underage semi-orphans in most cases live with the surviving parent, especially if the loss was recent. At the end of 2011, 78 percent of the minors whose fathers died lived with the single mother and 18 percent with the mother and her new partner. If the mother died, 64 percent lived with the single father and 22 percent with the father and new partner.

After the mother's death, 14 percent of the underage semi-orphans lived in, for example, a foster family or on their own.

Approximately 12% of these children has an islamic background and often cannot be placed in foster care that guarantee islamic standards. Holland currently has no islamic orphanage and is short on islamic foster parents.



The current intercultural healthcare system in the Netherlands is, however undergoing significant changes, the Netherlands is now more diverse in its demographics than ever and measures around Covid-19 have had enormous impact on those in need of care and those who provide care. The future requires large-scale sector-wide reforms in care and welfare organizations to focus more on results, community involvement and to look more at what people can accomplish on their own or with help of their environment.

The various demographic developments such as the arrival of refugees, the increase of conversion to islam and growth of migrant population have had major impact on the growing care needs of our target group, including vulnerable families, youth and the elderly that the SIZ Foundation has supported in recent years . The emergency measures of the government affected the majority of these people regarding significant impact on their vital needs, development and access towards self-reliance and self-development. In addition, people also have offered help in their own community or often donate in time of crisis fewer resources to continue their aid. Their solidarity and volunteering is less obvious, but often still possible. This results in a situation where many children (and parents) are struggling from day to day basis to stay on track.

Within the current Dutch care landscape, islamic care is still insufficiently heard of and often not fully understood. The current care provision is still not sufficiently equipped to accommodate people from other backgrounds adequate support.

For families living below the poverty line and singles with many children food banks can have a high treshhold when located far away. Often a shortage of toys and guidance lead to problematic incidents remotely. In addition, family members suffer from a higher degree of frailty, for example when they are in transitional situations/divorce, homelessness or lack of vital needs.





In many cases, there is a higher degree of tension when there is of (too) small housing and young people can't get enough energy at home especially in cases where family members suffer from depression or problems in which they experience a power relationship. Many young people dare unable to come out or speak up about the problems they are experiencing. Many of the refugees in our network live below the poverty line and suffer from war traumas/depression. It is not obvious for many families to purchase meat or fish that ritually slaughtered and often this is not included in the food packages of the food Bank. They also struggle with language delays that ensure that they cannot keep up with all policy developments. The elderly have difficulty with shopping and are in many cases in a social isolation. In the upcoming pages will show This concise business plan provides a brief overview of the building blocks that ensure that, in this dynamic time, culture-sensitive reception and tailor-made guidance can be offered and expanded to vulnerable bio or multicultural families and the quality of care within the facilities and services provided by SIZ are guaranteed. First of all, a clear and representation of the organization in which the current profile, organizational structure and vision are discussed

This plan also specifically addresses the expansion of facilities including the realization of a care farm and the expansion of projects in the northern provinces of the Netherlands. Next to this is the renewed course and organizational structure. Finally, it provides an overview of regular and intended activities and an explanation of how the organization intend to realize them.

Sabri Riahi  
interim advisor



## ORGANISATIONAL PROFILE

*With the power of the ummah we can achieve:  
Guiding orphans towards a better future, and  
guide them with love and they support. Hand in  
hand creating a future for our children*

SIZ the Islamic Care Foundation is a foundation that ensures the establishment and maintenance of a thorough intercultural care offer.

Our goal is to be able to receive young people and to provide appropriate guidance. In a natural environment; back to the fitrah (natural predisposition)

Foundation Islamic Care Netherlands, Chamber of Commerce: 859992706

The profile of the organization is twofold;

A. Setting up and maintaining intercultural care provision (by appropriation and/or (sub)letting of registered property and obtaining inventory data for the care institution

B. (Professional) help, adv. and support to youth, young people, vulnerable families, the elderly, people with disabilities and refugees.

The organization focuses in particular on bi- or multicultural families, singles with many children, families with mentally handicapped children, refugees and households that are or will be in a vulnerable position themselves and are dealing with migration, poverty, shortage of vital foodstuffs. loneliness, depression or domestic violence.

The current SIZ locations consist of our head office located at Zernikepark 1 in Groningen, a location Nijeveense Bovenboer 11 in Nijeveen and a guidance location at Plutolaan 329 in Groningen. This location has room for group counseling of up to 12 clients.

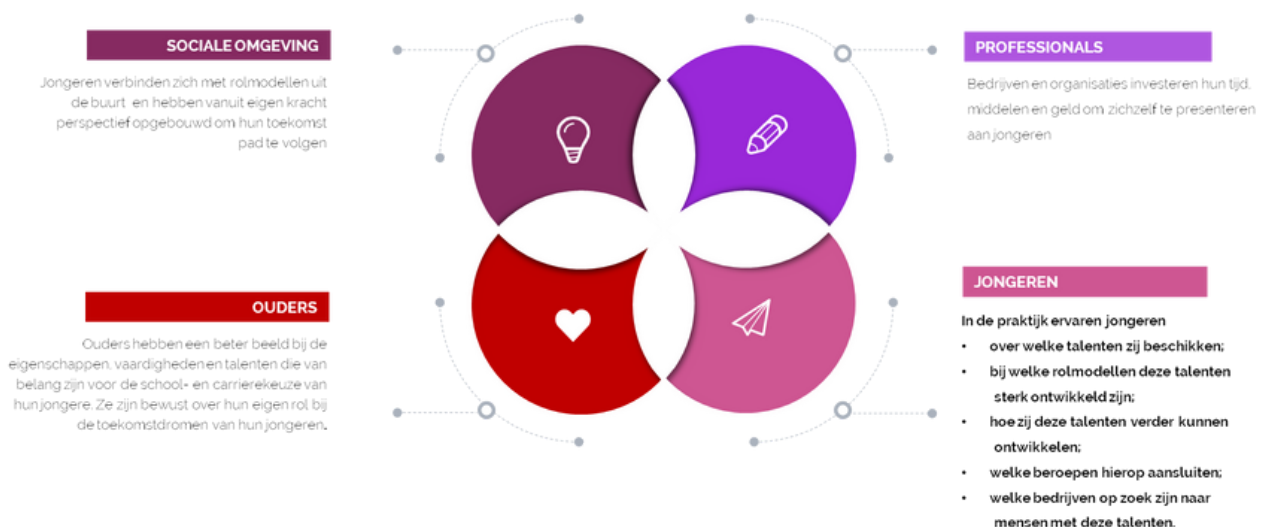


# MISSION

SIZ aims to provide safety and involvement to people who are in a vulnerable position. This includes a calm and pleasant environment. A place where involvement is the norm and a child or person safe and not alienated from parents/carers/loved ones. Where someone can distance themselves from experienced pressure or stress and can take care of themselves come. A place where vitality and health are of paramount importance and we show understanding and respect for a person's background and potential different frame of reference. A place where we prepare food that matches individual need patterns and ethical accountability of our target group (halal, vegan, vegetarian) A place where there is room for knowledge exchange between different nationalities. A place where solidarity, citizenship and pedagogical principles become reciprocal encouraged and taught.

*"It takes a village to raise a child. It takes our local community to support all"*

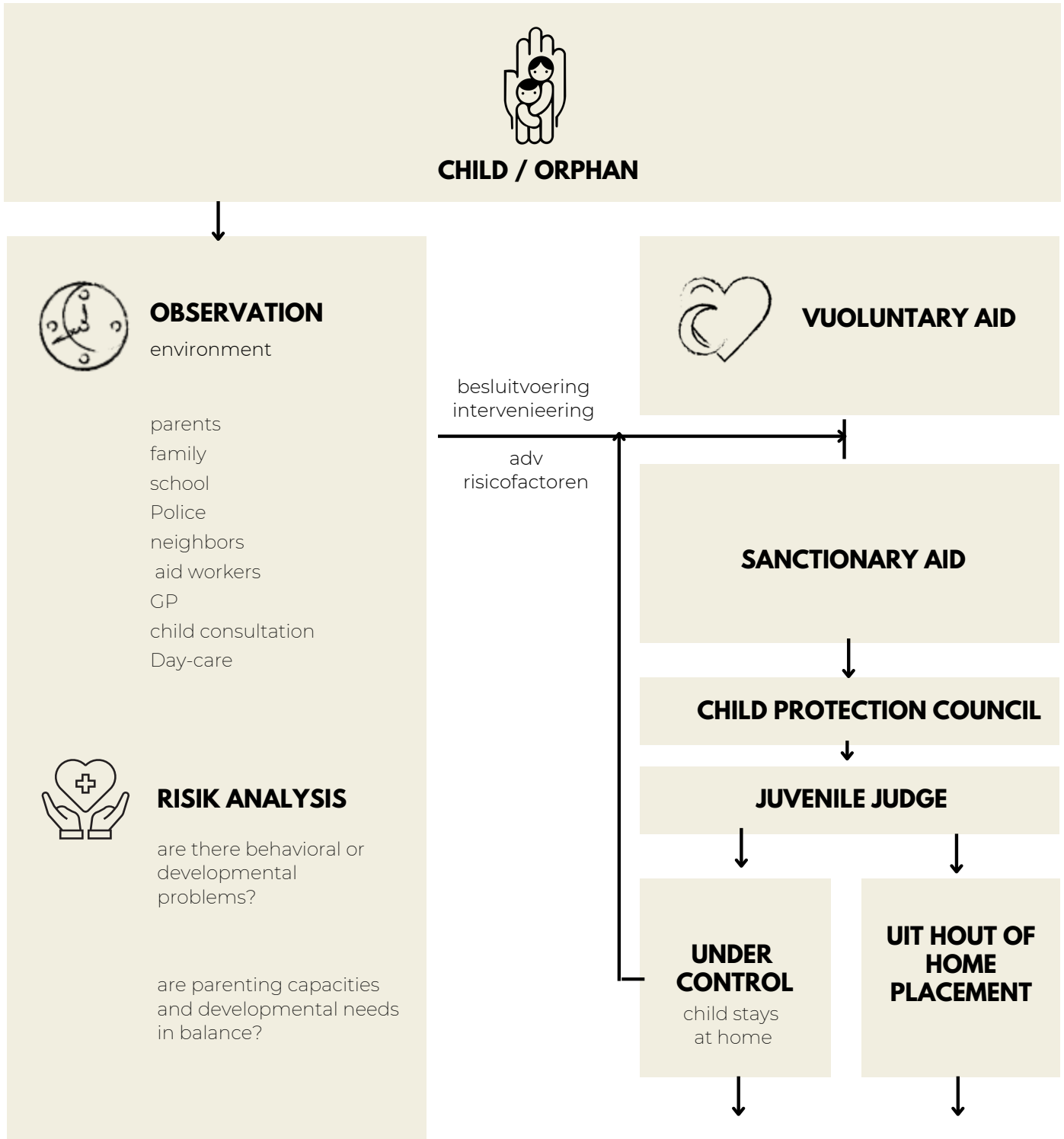
We embrace that thought. A child or young person does not stand alone, but grows up in an environment where the influence of adults is great. We believe in the power of a strong (parenting) network, enter into dialogue and help each other. From meeting between parents while playing outside their children to meeting during/by various social initiatives in the city. We believe in a pedagogical climate with natural and self-evident participatory connectedness, mutual learning capacity and respect for differences based on the core values of trust, safety and connectedness.

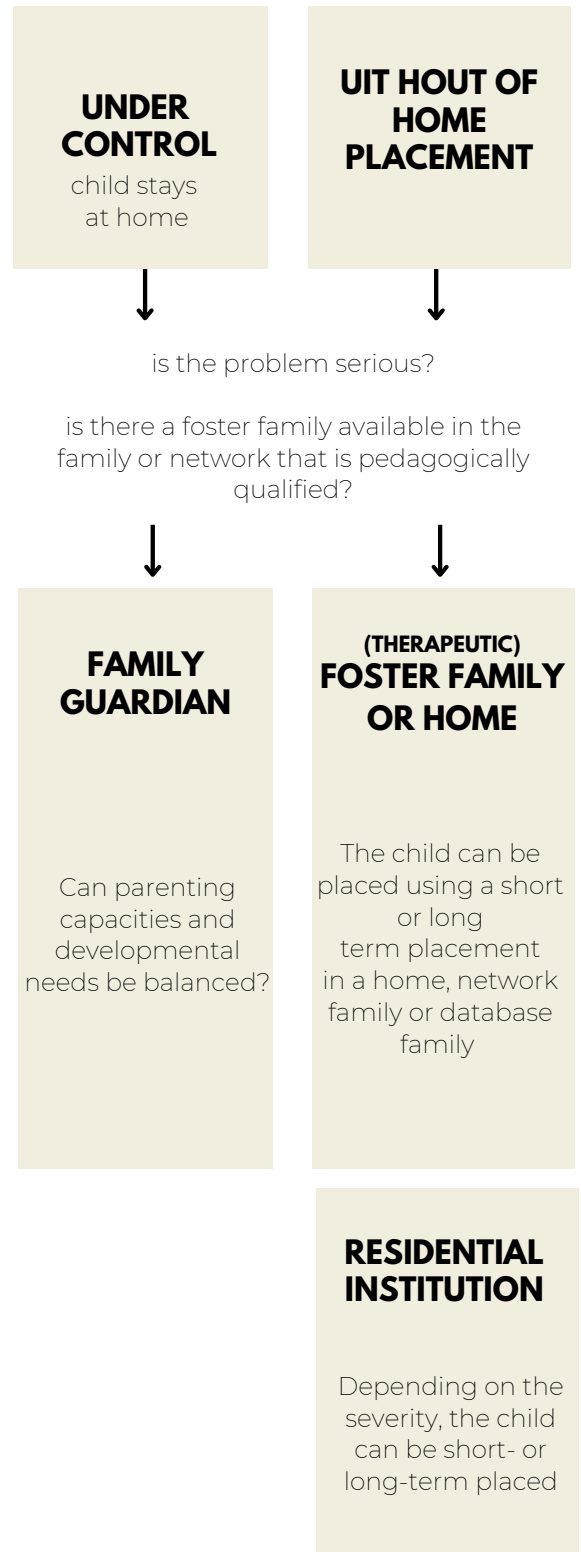




# FLOWCHART

care chain





The Islamic Care Foundation (SIZ) is committed to optimal guidance of both child and parents/guardian during a trajectory in youth care. In addition to our shelter and orphanage (under construction), we offer referrals and guidance to Islamic foster families and we are committed to qualifying those involved or volunteers.

SIZ is committed to increasing the number of file families and network families that can safeguard Islamic principles in the parenting climate, so that the child can remain within the family or network if possible and, in the case of a residential out-of-home placement, the child can be placed in an environment growing up in which Islamist norms and values are observed.



## FORMS OF INDICATED RELIEF



**LEARN-WORK  
TRAJECTORIES**



**CRISIS RELIEF**



**WEEKEND / STAYING  
RELIEF**



**24-HOUR CARE**



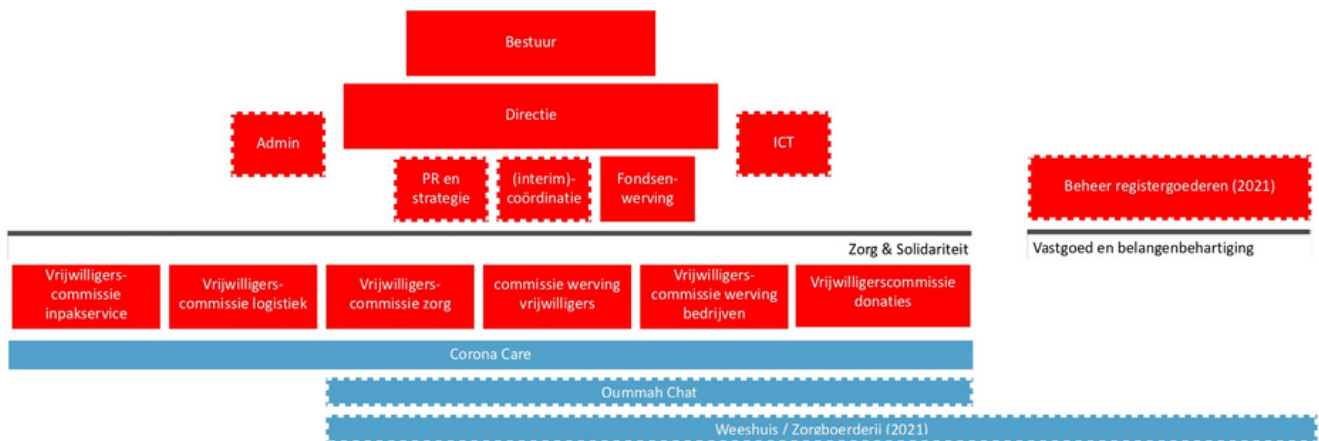
## CORE VALUES

We believe that respect for each other, involvement and support contribute to human health and well-being and clarity, tranquility, So children can grow up in an environment where they can optimally expand their network, explore and develop.

cleanliness and regularity can contribute to the development of vitality and living skills. We base our pedagogical approach on standards of support, stimulation and moralizing: the children become normative formed, so that they stay on the right path, society is not a nuisance deliver and be as successful as possible in their lives (on Earth) and in the afterlife. In addition, when dealing with subjects, there is room for the input and questions of the children and for dialogue, and is mutual exchange is also encouraged. Making it (better) negotiable education and everything that comes with it is very valuable. This ranges from simple questions and sharing experiences to early identify more serious problems. And deal with it in a way that is in the best interest of the child. Together we want to take care of our local society and caring for our brothers and sisters in the society. With its core values, expertise and diversity and sensitivity is deployed in a proactive and safe atmosphere. By deploying recognizable and identifiable key figures and counselors who act on universal pedagogical core principles we achieve a thorough and effective working method in the care and services.



# ORGANISATIONAL STRUCTURE



# TARGET GROUP APPROACH

## Community 01

Doordat jongeren vanuit eigen interdeedeeinemensse aan de slag gaan is de intrinsieke motivatie hoog.

## Locally oriented 03

Lokale en prominente sleutelfiguren en organisaties uit de buurt spelen een actieve rol in het programma.

## communication 05

Door de taal, van creativiteit en dromen te spreken sluiten we met onze uitingen aan op de belevingswereld van jongeren.



## 02 follow up

SIZ koppelt meevoudige intelligentie aan toekomstperspectieven.

## 04 Diversity

Rolmodellen zijn identificeerbaar door hun (culturele) achtergrond en laten zien dat dromen werkelijkheid kunnen worden.

## 06 Persoonlijk

SIZ benadert elk uniek jongere persoonlijk en bouwt een band op.





# QUALITY ASSURANCE - CARE FOR QUALITY



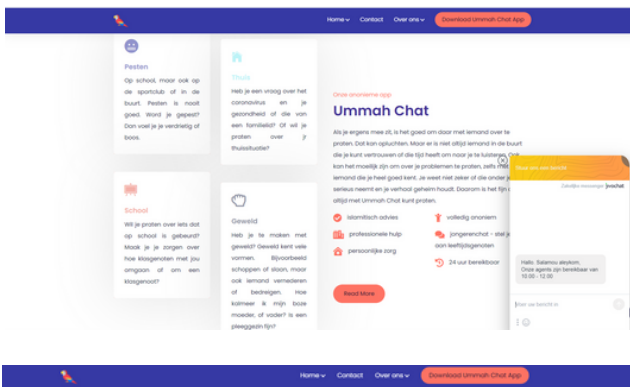
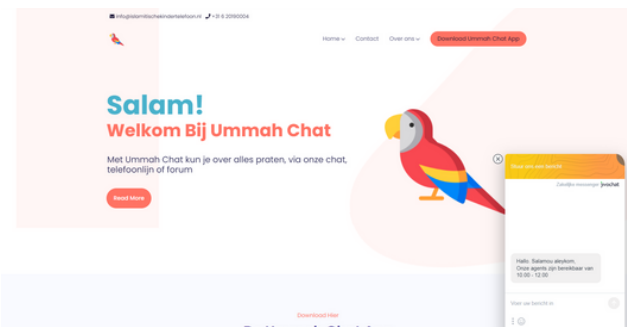
# OUR ANONYMOUS COMMUNITY APP



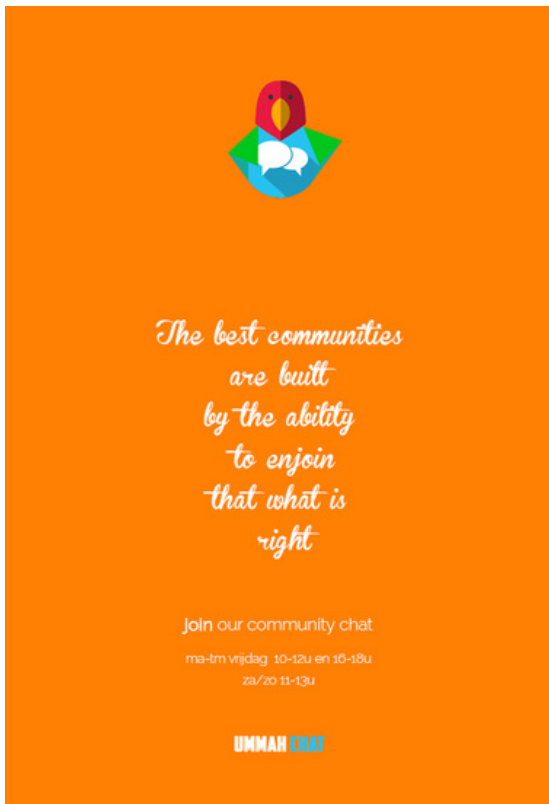
## Ummah Chat

If something is bothering you, it's good to talk to someone about it. That can be a relief. But there isn't always someone around you can trust or have the time to listen to you. Also, it can be difficult to talk about your problems, even with someone you know very well. You're not sure if that other person takes you seriously and keeps your story a secret. That's why it's nice that you can always talk to Ummah Chat.

- islamic advice
- professional help
- personal care
- completely anonymous youth chat -
- ask your question to peers available 24 hours

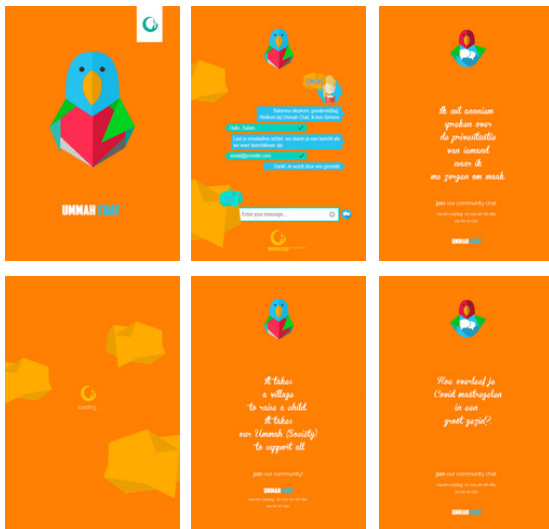


# WAT IS UMMAH CHAT?



## How it works

Unfortunately, we cannot solve everything. We will try to sort everything out together with you. We therefore listen very carefully to what you have already thought of or done to solve the problem. And often you come up with new ideas during the conversation. Unfortunately, some things cannot be done right away. For example, when parents get divorced. You or we often can't change that. It can help to talk about it. Sometimes you can't figure it out with us. Then we can give you the address or telephone number of organizations or people who can help you further. You can then go there, or you can look on the internet or call them. Sometimes a child needs immediate help. We then look together with the child on what is the best thing to do.





### *How it works*

Unfortunately, we cannot solve everything. We will try to sort everything out together with you. We therefore listen very carefully to what you have already thought of or done to solve the problem. And often you come up with new ideas during the conversation. Unfortunately, some things cannot be done right away. For example, when parents get divorced. You or we often can't change that. It can help to talk about it. Sometimes you can't figure it out with us. Then we can give you the address or telephone number of organizations or people who can help you further. You can then go there, or you can look on the internet or call them. Sometimes a child needs immediate help. We then look together with the child on what is the best thing to do.

## CURRENT SITUATION REAL ESTATE

SIZ is acquiring belowmentioned real-estate to establish the first islamic care farming orphanage concept in the Netherlands. Holland is one of the pioneering countries in this sector, where care farming has developed into a very diverse sector, with some farmers focussing primarily on agricultural production and others more specifically on providing care services. Care farms are increasingly open to a diversity of participants. The sector has become professionalised with the establishment of strong regional organisations and a steady growth increase in revenues, providing employment opportunities and boosting the economy of rural areas.

In our concept, we combine two promising innovations in care farming: education for school dropouts and the establishment of social farming activities in cities, matching the changing demands in Dutch society by integrating social, ecological and economic benefits

### LOCATION

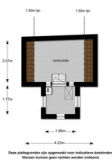
province of Groningen  
Holland



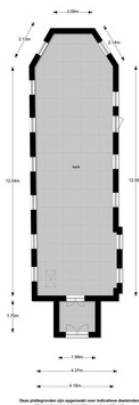


## CURRENT SITUATION REAL ESTATE

- 311 m<sup>2</sup> housing facilities



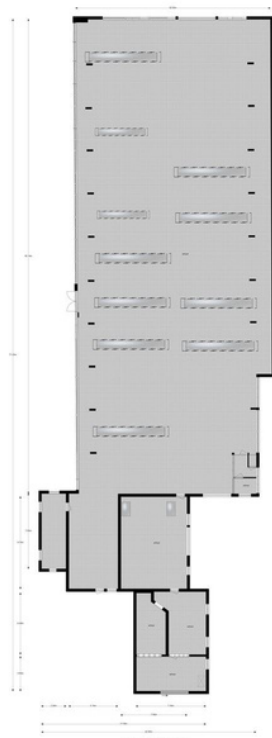
- 72 m<sup>2</sup> mosque / prayer facilities





## CURRENT SITUATION REAL ESTATE

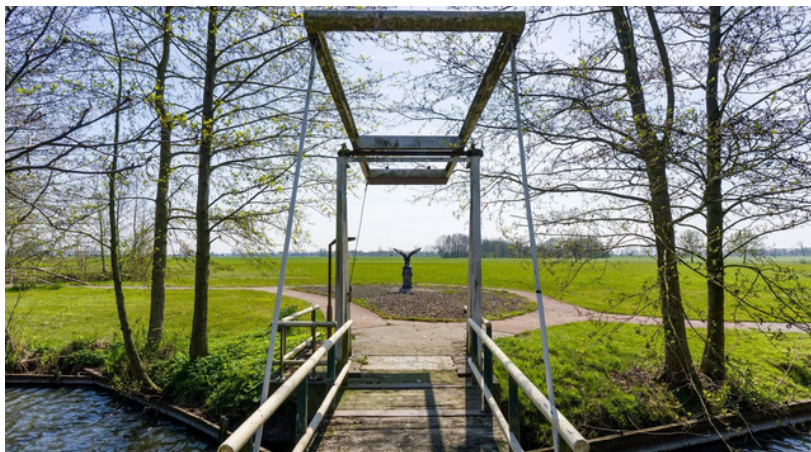
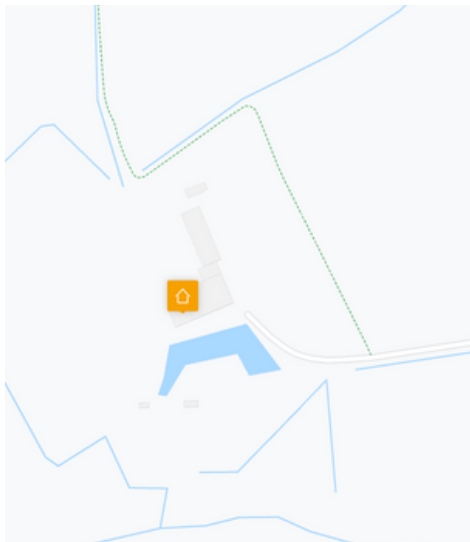
- 2.457 m<sup>2</sup> care farm



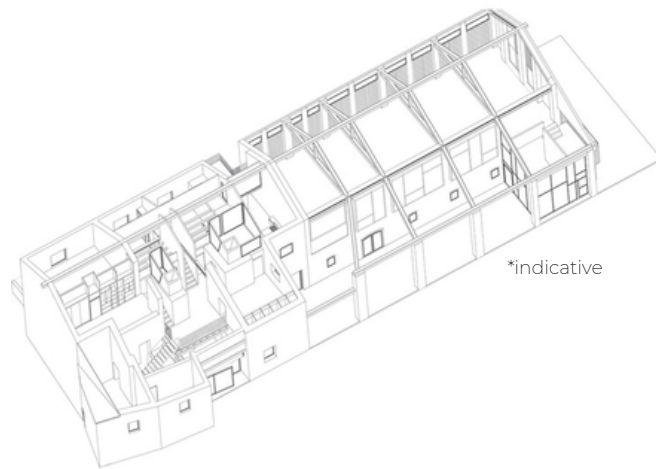


## CURRENT SITUATION REAL ESTATE

- 75,336 m<sup>2</sup> plot



# RENOVATION PLAN CARE FARM DORMITORY



**MAIN FLOOR  
FAMILY DORMS /**

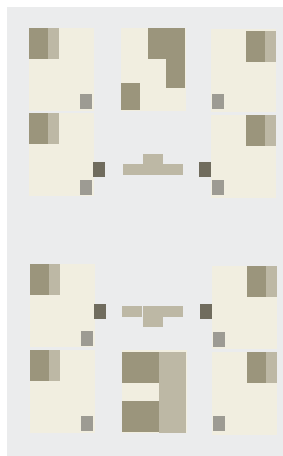
capacity: 10 families

**1ST FLOOR  
WOMEN DPTMNT**

capacity: 14p

**2ND FLOOR  
MEN DPTMNT**

capacity: 18p



**AZAR** architecten

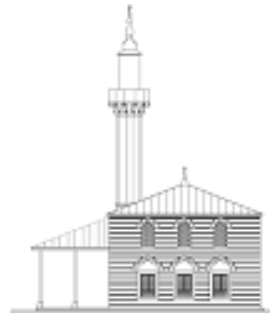
The conceptual design is currently developed by AZAR Architects

Mohamed Arab (architect)

<http://www.azararchitecten.nl/>



# RENOVATION PLAN PRAYER FACILITY



\*indicative



## PRAYER FACILITY

capacity male prayer hall: 70p  
female prayer hall 20p



**AZAR** architecten

The conceptual design is currently developed by AZAR Architects

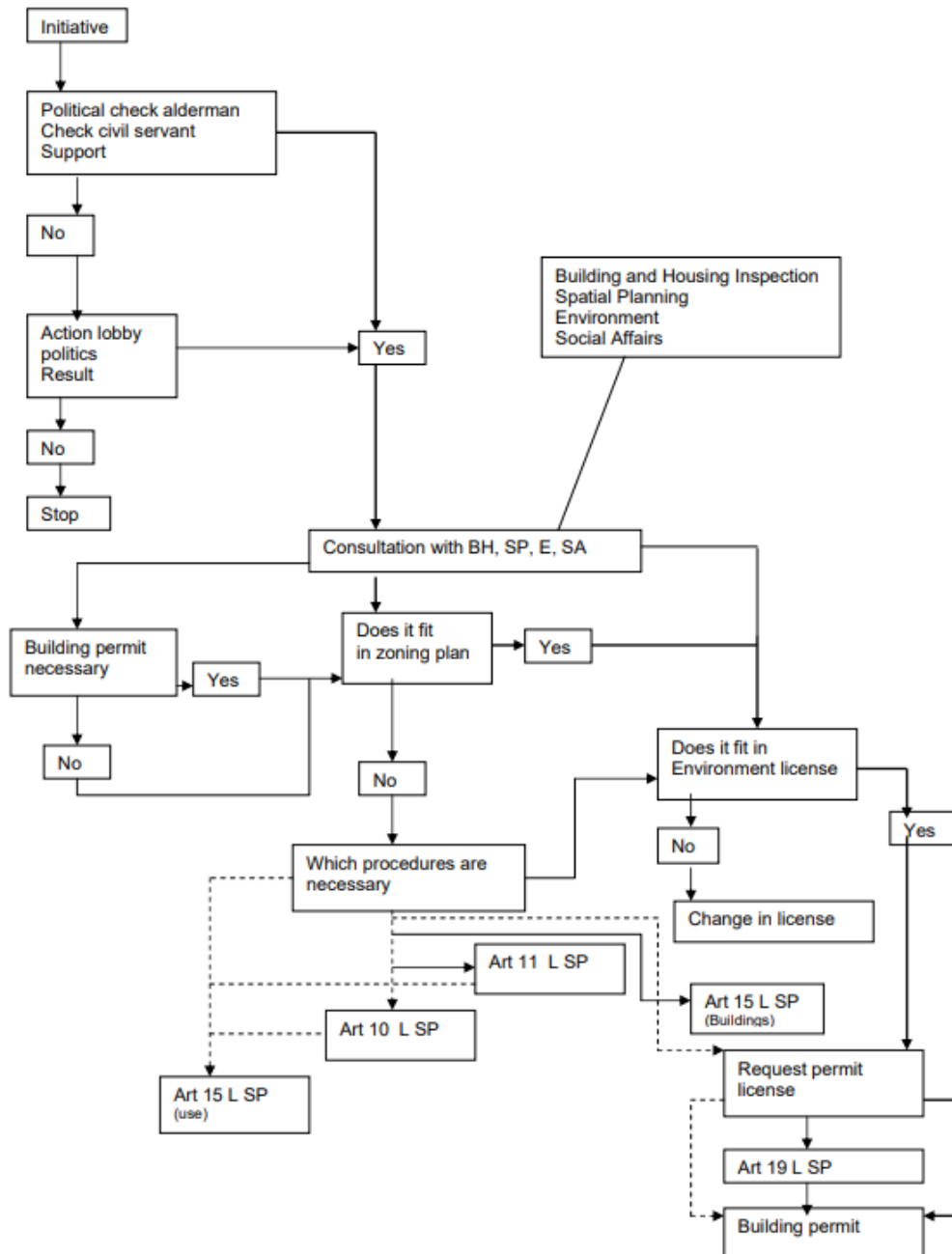
Mohamed Arab (architect)

<http://www.azararchitecten.nl/>





## BUILDING PERMIT FLOW CHART



## PARTNERS



**FYOUSION**

**YNOA & PARTNERS**





## CURRENT FACILITIES



Zernikepark 1  
Groningen



Plutolaan 329

